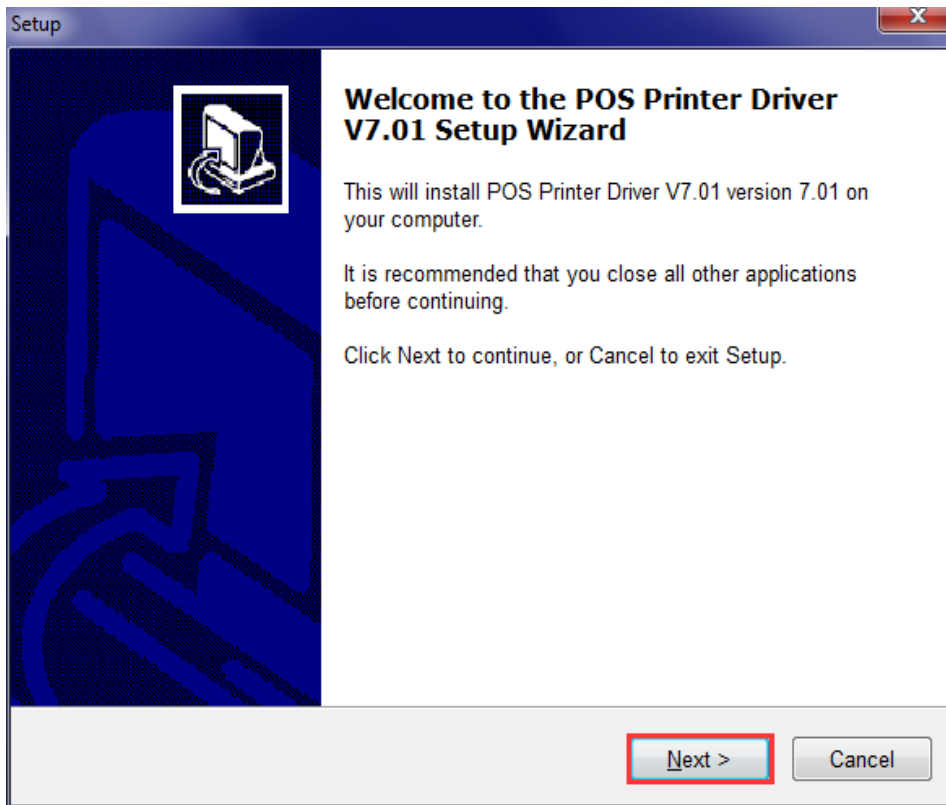
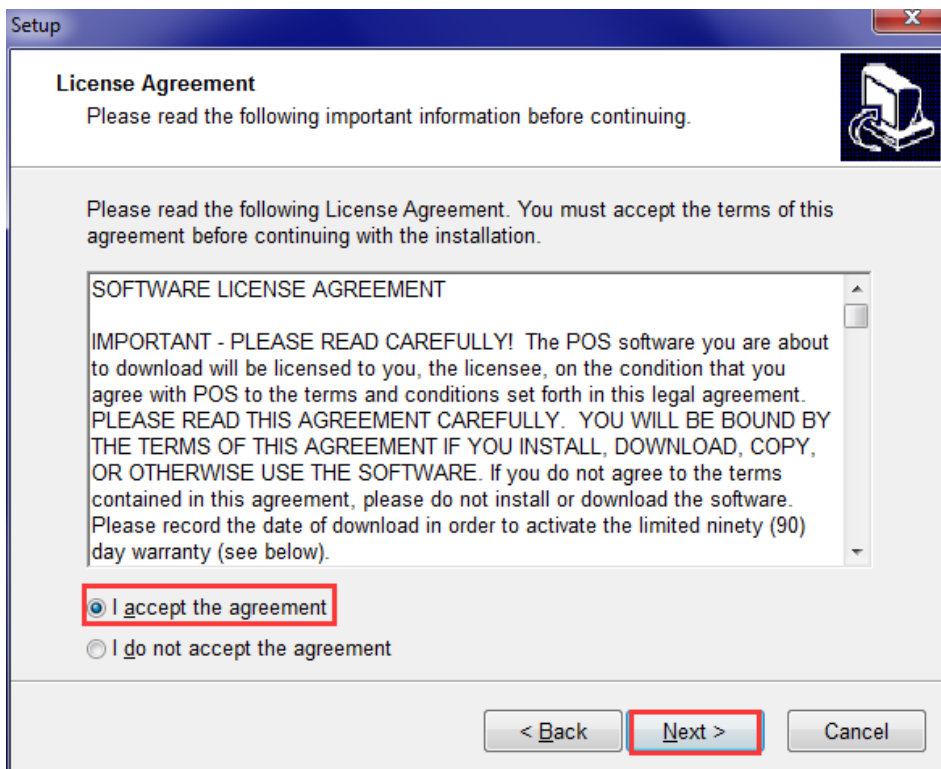


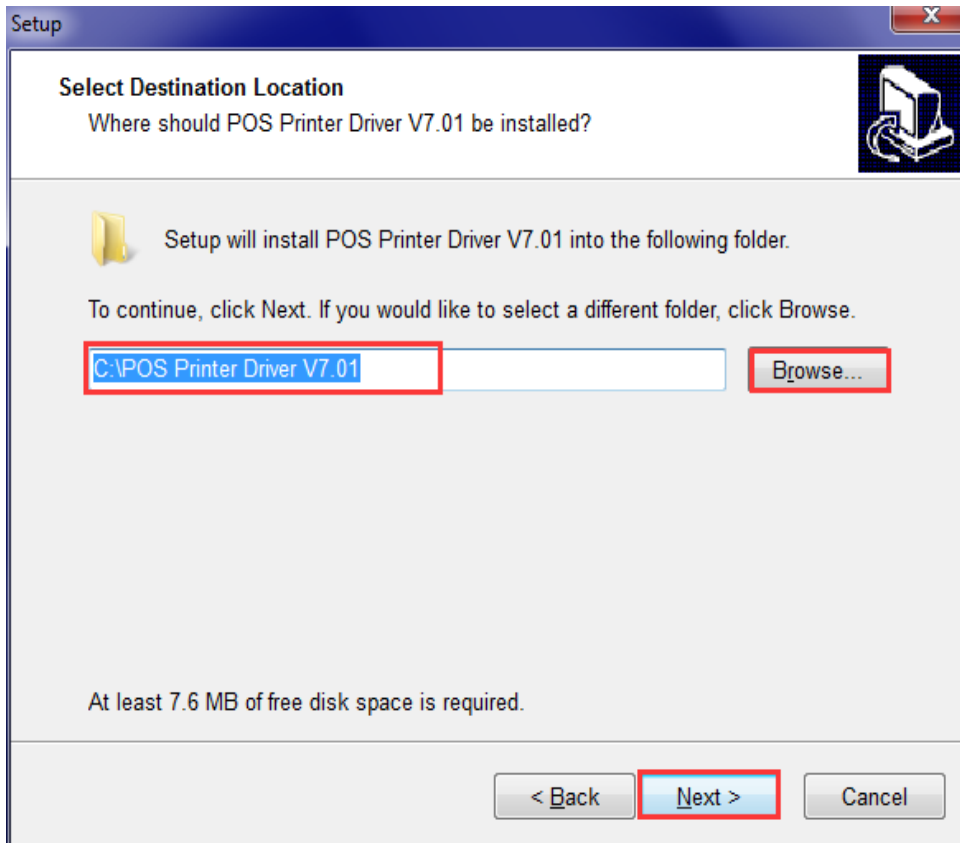
1. Find the place you store the driver, and double click the icon  to install, click “Next”:



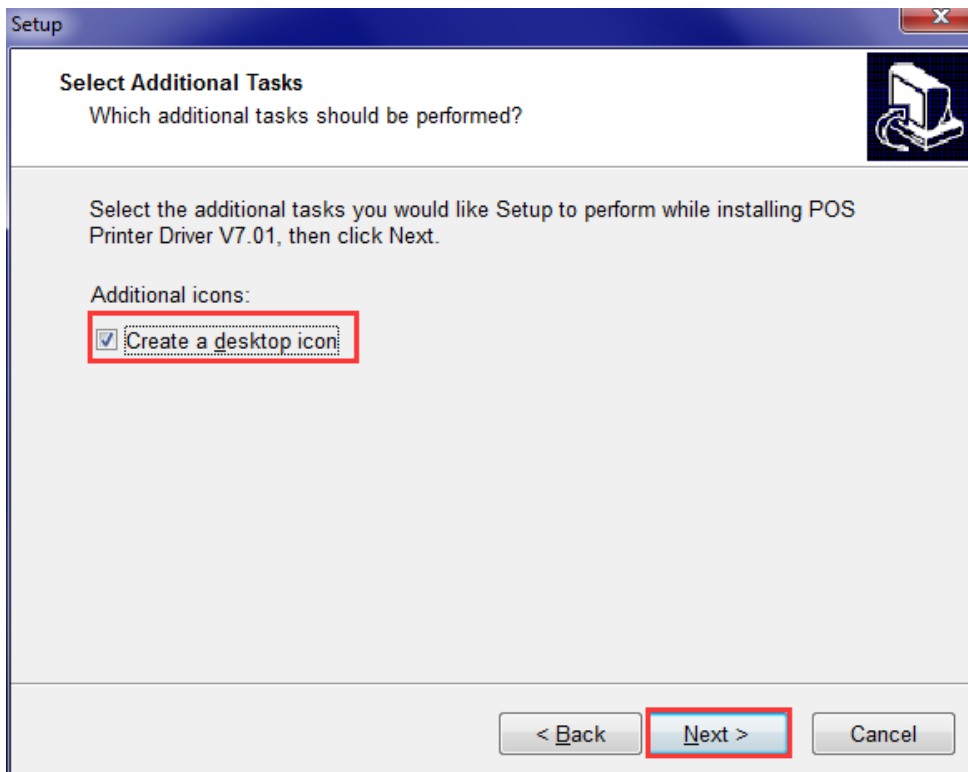
2. Choose “I accept the agreement”, click “Next”



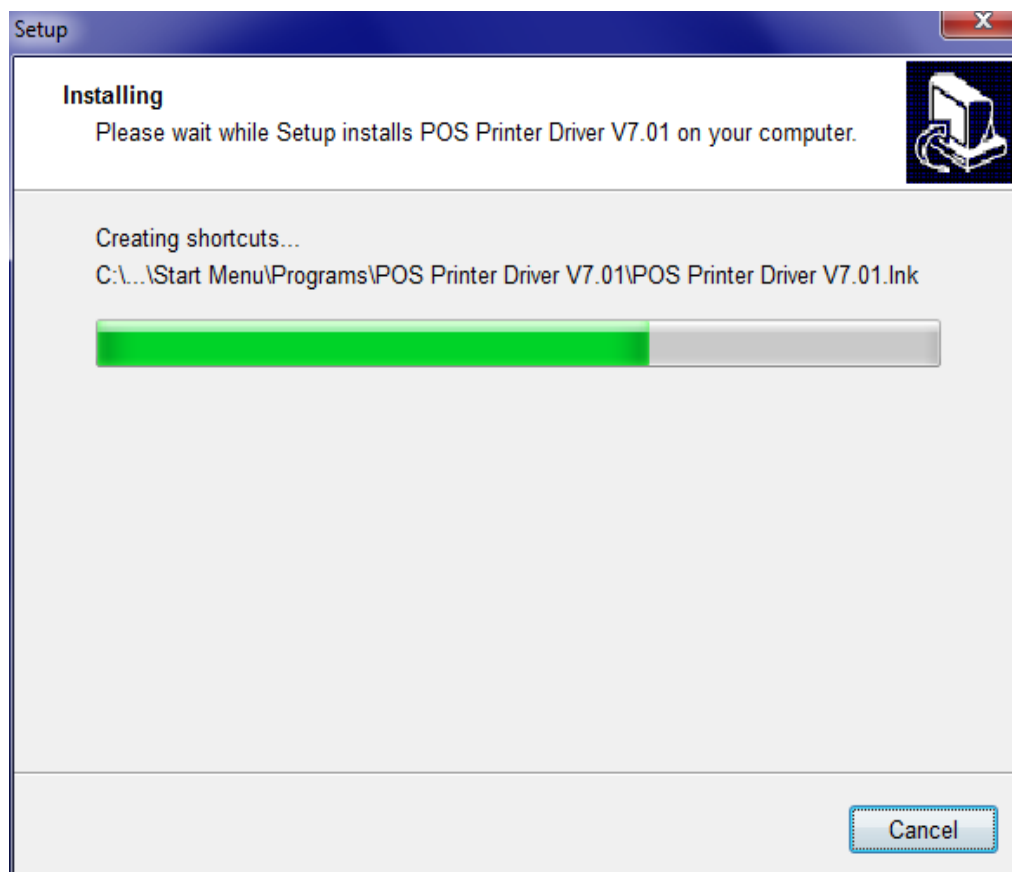
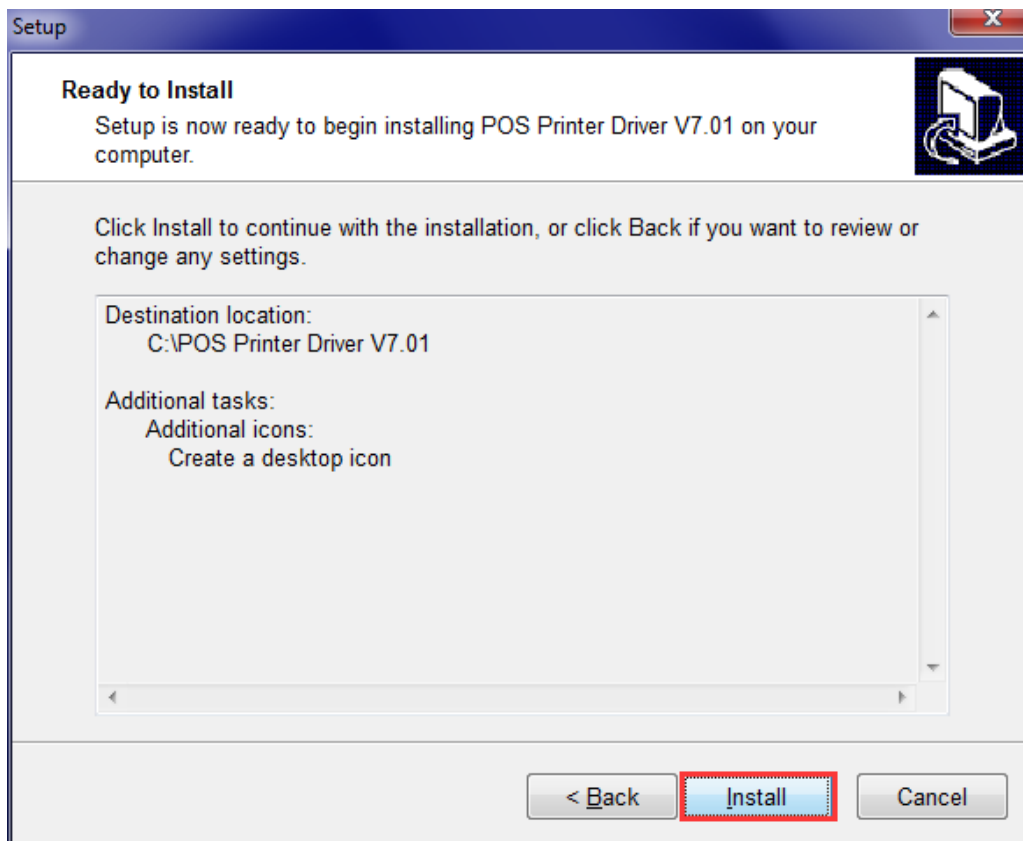
3. To choose default route, click “Next”.



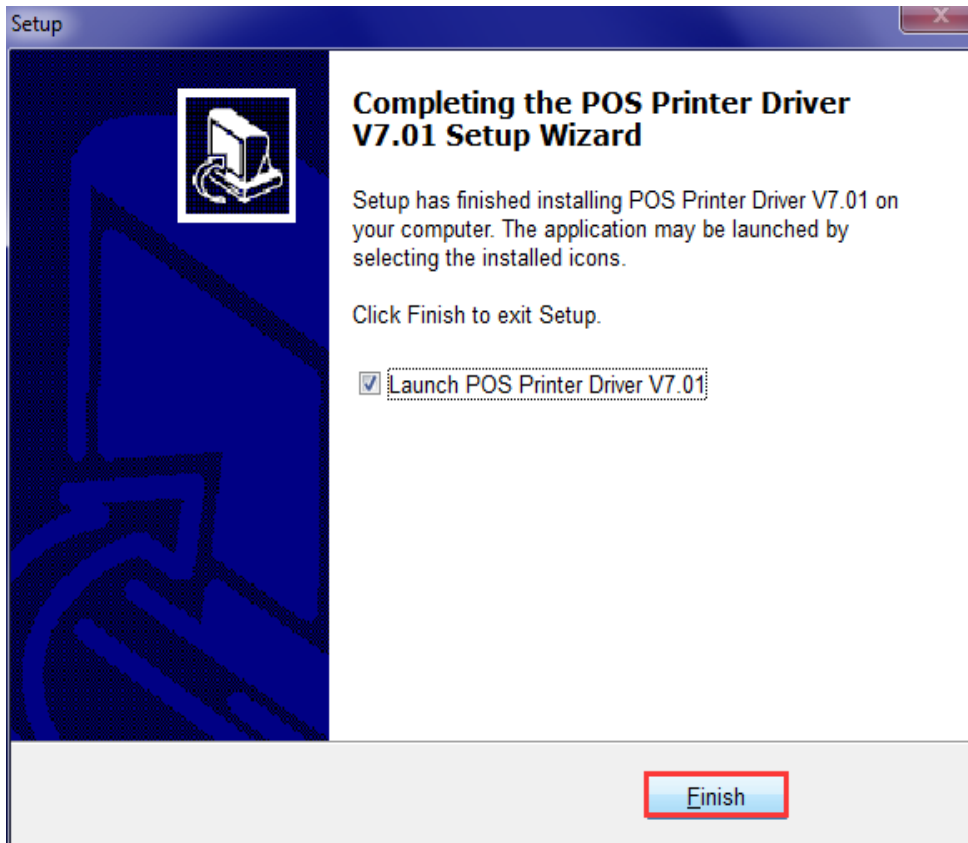
4. “Create a desktop icon” and click “Next”.



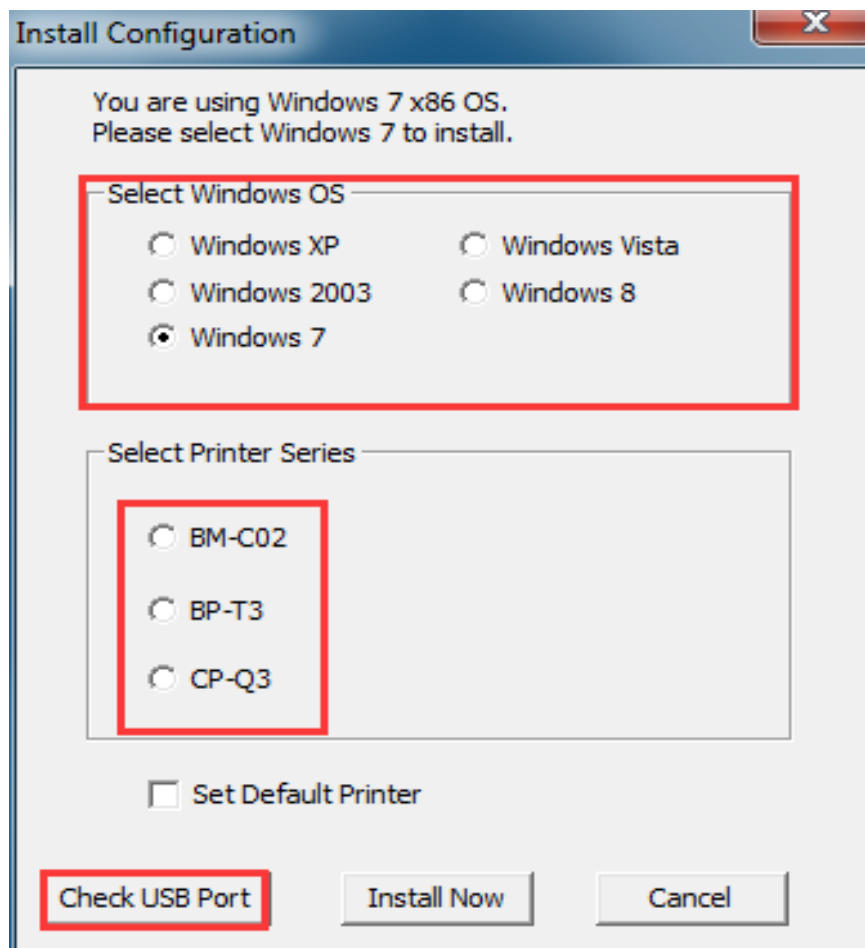
## 5. Waiting for installing



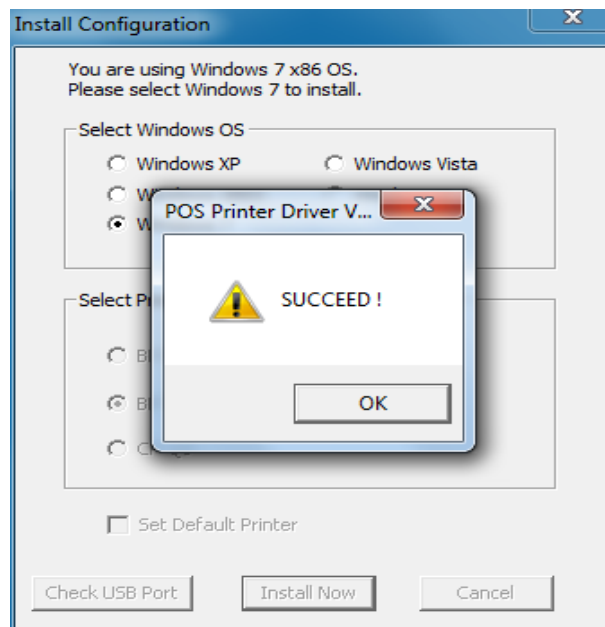
6. "Launch POS Driver V7.01" and click finish.



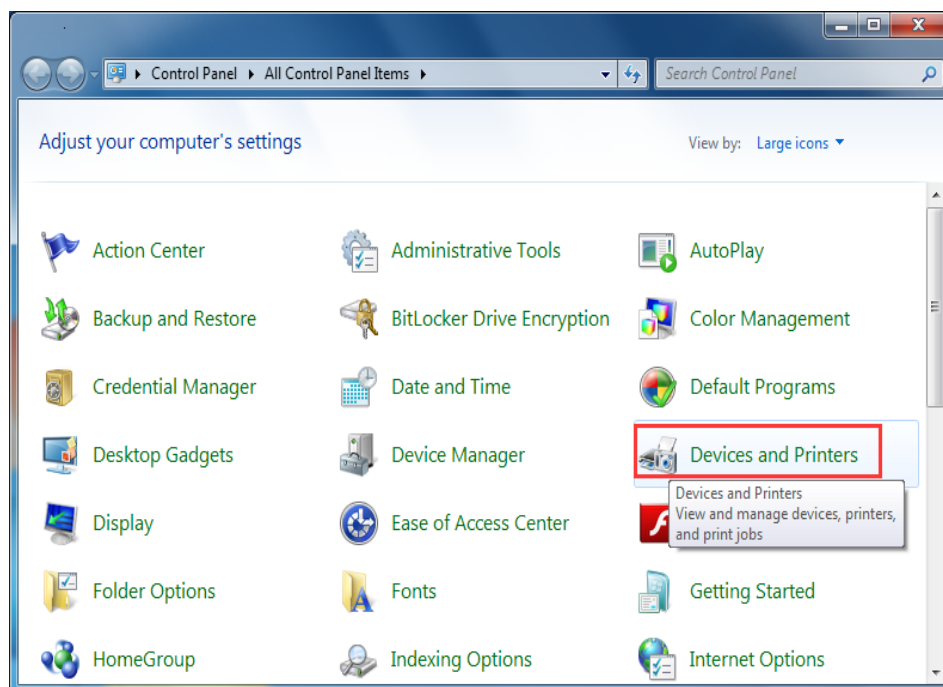
7. In condition that the printer is with USB port, click "check USB", and software will check the USB port automatically.



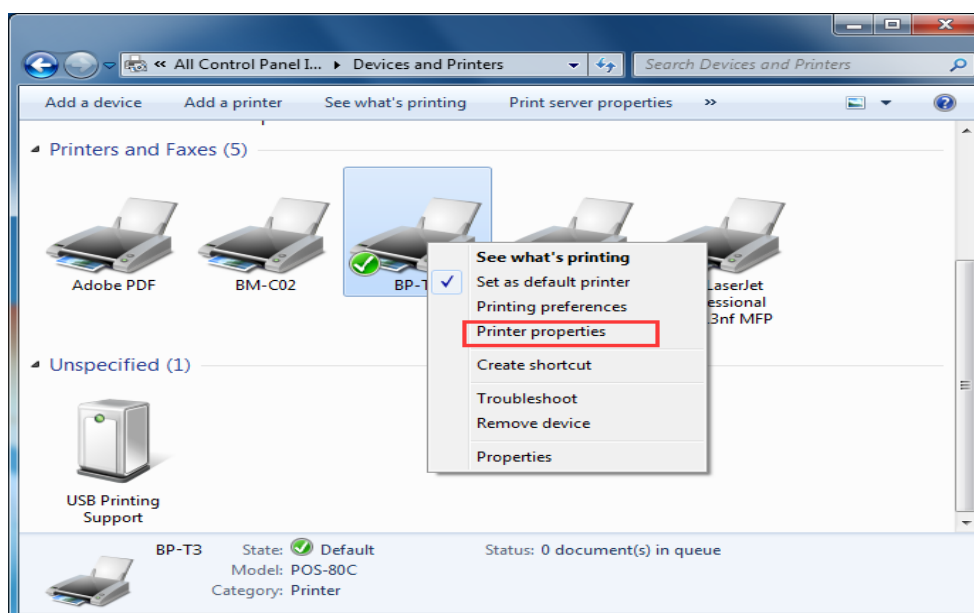
8 Choose used printer model, and click “install now”



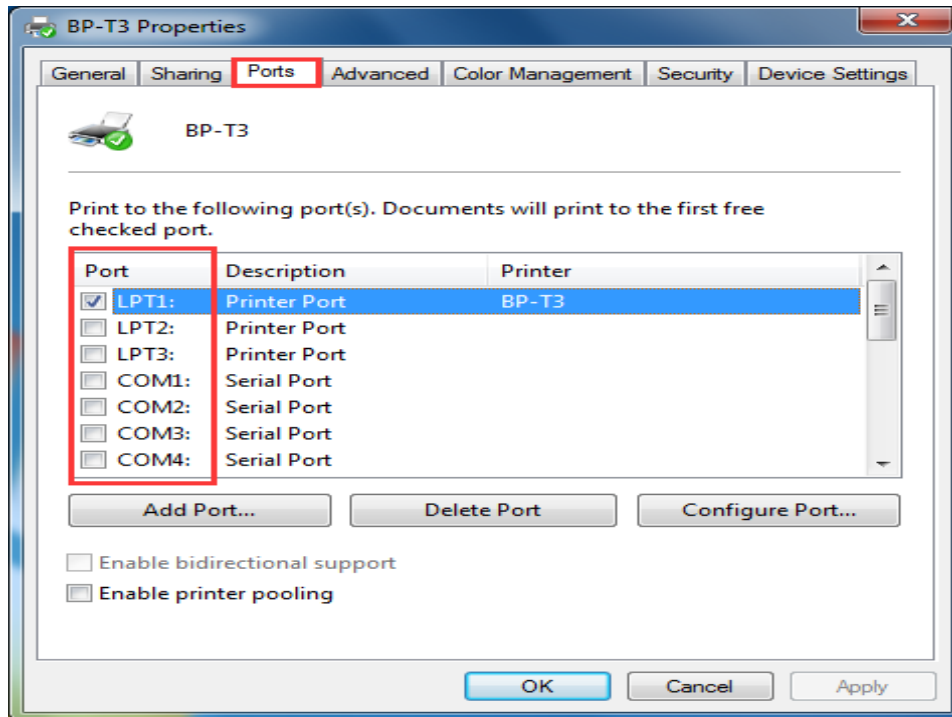
9. Find the device and printer, as shown:



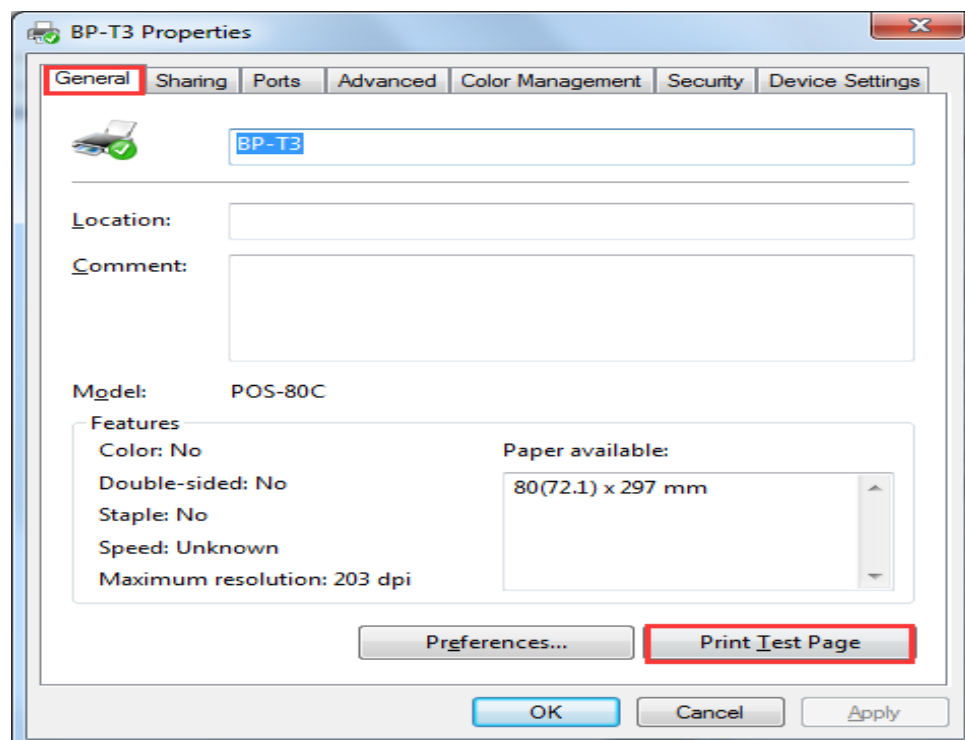
10. Find the installed driver icon, right icon --- Printer Properties, as shown below:



12. Apply the checked port.



13. Choose “General”, click “print test page”.



*The drive has been installed  
successfully when test page is printed.*

*Thanks for your support*